

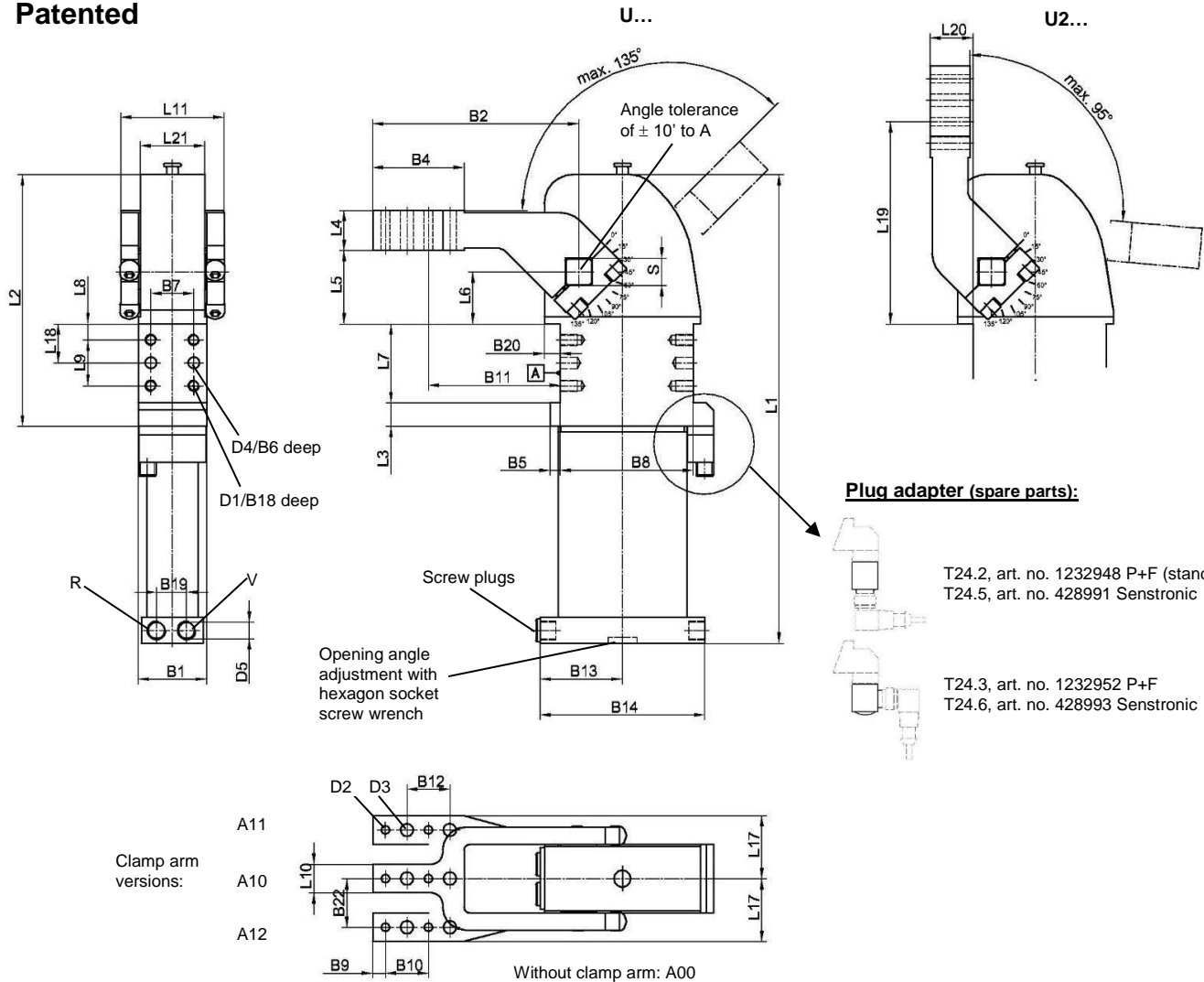
Universal Clamp

Stepless adjustable opening angle,
approx. 30% reduced air consumption at unchanged clamping force

U/U2 ... BR5 A10

5°/10° - 135°

Patented



Ordering example:

U 50 BR5 W A10 T24.2

U 50 BR5: Type
W: **On request:** Housing coating
resistant to welding beads
Clamp arm version
A10:
T24.2: Sensing system (standard)

Opening angles:

Stepless adjustable in the range of
5° to 135° (type U 50/63)
10° to 135° (type U 80)

On request:

Housing coating resistant to welding
beads

*Tolerance for dowel holes ± 0.02, for threaded
holes ± 0.1.

Medium: Air, max.6 bar, operation permitted with
oil-free air.

Attention:

The use of external throttle check valves is
recommended on assembly. They are not included
in the scope of delivery!

Optionally an operation without external throttle
check valves is possible.

Ordering example Tünkers sensing systems, two-piece:

...T24.2/5 With straight plug adapter (standard)
...T24.3/6 With plug adapter 90° angle

Plug adapter for inductive sensor 24 V,
with integrated LED's, sensor plug M12x1

Type	Holding torque max.	Clamping moment at 5 bar	Weight ~ (kg)	B1	B2	B4	B5	B6	B7*	B8 ±0,1	B9	B10 ±0,02
U/U2 50	800 Nm	160 Nm	3,5	48	144	65	6,5	12	30	93	9	30
U/U2 63	1500 Nm	360 Nm	4,8	48	144	65	7	12	30	93	9	30
U/U2 80	2500 Nm	800 Nm	11,6	68	179	65	8	12	50	134	9	30

Type	B11 ±0,1	B12 ±0,2	B13	B14	B18	B19	B20	B22 ±0,1	D1	D2 H7	D3	D4 H7	D5	L1	L2	L3
U/U2 50	92	30	41	82	12	19,5	10,5	34	M8	6	9	8	G 1/8	286	166	16,5
U/U2 63	92	30	57,5	115	12	21	11	37	M8	6	9	8	G 1/4	329	175	16,5
U/U2 80	119	30	67,5	135	15	24	20	50,5	M10	6	9	8	G 1/4	473	257	29

Type	L4 ±0,1	L5 ±0,2	L6 ±0,05	L7 ±0,1	L8 ±0,1	L9 ±0,1	L10	L11	L17	L18 ±0,05	L19	L20 ±0,2	L21	S h9
U/U2 50	28	51,5	36,5	55	11	32	20	69	34,5	27	141,5	30	45	19
U/U2 63	28	51,5	36,5	55	11	32	20	79	39,5	27	141,5	30	48	22
U/U2 80	35	70	50	80	15	50	25	108	63	40	190	35	65	30